

# Digital CMOS Video Cameras



## Highlights

- 1, 3 and 5 megapixel resolution
- Perfect for documentation and archiving applications
- Fast frame rates

## Applications

Brightfield, Darkfield, DIC, Live Cell Imaging, Histology, Pathology, Cytology, Defect Analysis, Semiconductor Inspection, Metrology

It is an excellent fit for documentation and archiving applications.

## Camera Specifications

Mega pixels	Resolution	Sensor	FPS	Bit Depth	Read Noise	Model Number
<b>DK Series</b>						
2.0	1600X1200	1/2" CMOS	20	8 or 10	20 e-	<b>DK1000</b>
3.1	2048X1536	1/2" CMOS	12	8 or 10	20 e-	<b>DK3000</b>
5.0	2592X1944	1/2.5" CMOS	5	8 or 10	20 e-	<b>DK5000</b>

### Auto/Manual Exposure

### Auto/Manual White Balance

### Programmable Gain, 1 to 10X Optimizable

### C-Mount Lens Aperture

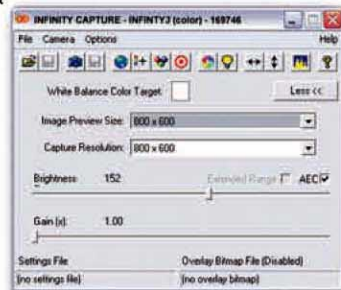
### USB 2.0 High-Speed Interface

Power: USB Bus Power or optional 5VDC@500ma Power Supply

## Capture Software

This intuitive user interface includes all of the basic features needed to control the camera and capture images. Features include:

- Real Time Video Preview
- Separate Preview and Capture Controls
- Automatic/Manual Exposure
- Automatic/Manual White Balance
- Manual Hue and Saturation
- Manual Contrast/Brightness/Gamma
- Manual Preview Quality
- Manual Preview Zoom Level
- Multiple Image Averaging
- Preview Histogram
- Global Electronic Gain
- User Defined Light Source
- Flat Field Correction
- Highlight Saturated Pixels
- Overlay Bitmaps
- Alpha Blended Bitmaps



Also included is a TWAIN interface, which allows the camera to be used with 3rd party software applications.

## MEIJI TECHNO AMERICA

3010 Olcott Street  
Santa Clara, CA 95054-3207  
800-832-0060  
[www.meijitechno.com](http://www.meijitechno.com)  
[sales@meijitechno.com](mailto:sales@meijitechno.com)

